

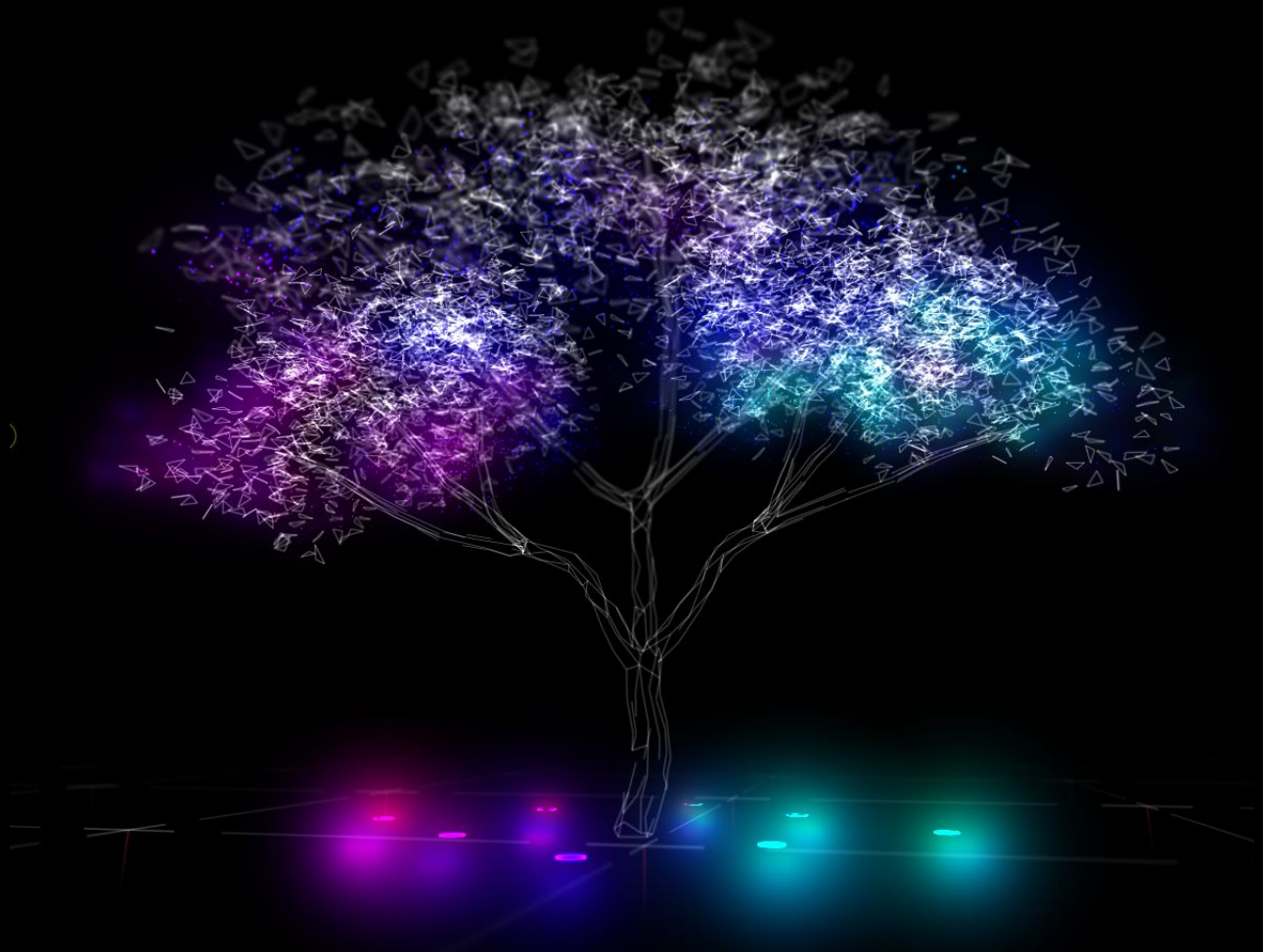
---

**JoshuaHubert.com**

2601 Adeline St.  
Suite #201  
Oakland CA. 94607  
(415)-623-4958

## Miramar Lighting

Ocean Avenue Association CDB



---

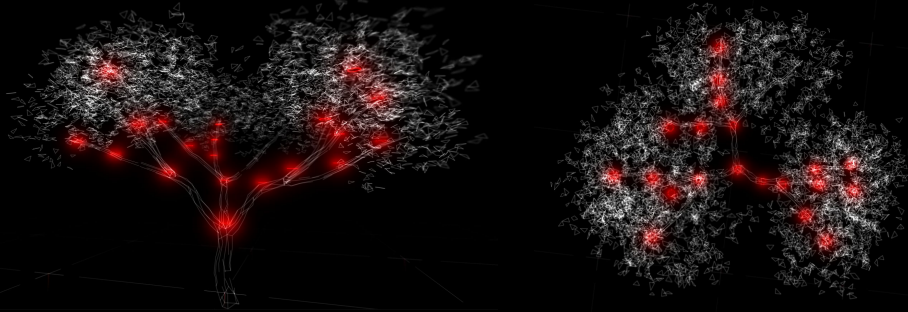
## **- Overview**

Transformation of the Miramar Tree(s) at the intersection of Ocean Avenue and Miramar Street into illuminated sculptures with colorful glowing effects that flow around the branches and canopy creating a dynamic yet subtle and elegant never repeating pattern. Project aims to bring art and beauty to the district while creating an attraction to bring folk into the area to promote local business and community.



## **-Design / Appearance**

The Canopy of the Miramar Tree(s) will be illuminated with full color animated LED flood lights. The lighting fixtures will be placed on the broad lower branches and ground facing upwards to illuminate the canopy with ambient lighting to create no harsh glaring light for observers, local traffic, or residents. Placement allows for leaves and small branches continue to be landscaped.



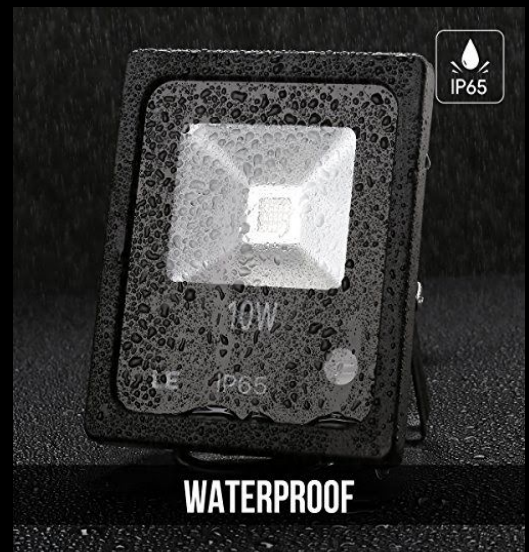
The smaller Miramar in the road median can support additional ground lighting to illuminate the underside of branches and trunk. The wiring and fixtures on the tree will be camouflaged to match surroundings. A waterproof box can be placed near the tree, along a street poll, or wall of nearby structure to hold the LED Controller, PC, and Power supplies.



---

## -Engineering/Tech

An estimated 30-40 High brightness 10w full color LED Flood light (roughly 30x brighter than average LEDs) will be used to illuminate each tree. Each fixture is individually programmable allowing patterns to flow from one to the next in a fully networked animated lighting array. The patterns created will never display the same pattern twice though they can be set to specific color pallets, speeds, patterns, and brignessess. The fixtures are robust heavy duty units that can operate nightly year round and withstand Bay Area weather.



An LED controller and Windows 10 PC will be connected to local Internet connection via Ethernet or Wifi with ISP monthly cost provided by Ocean Avenue Association. Bandwidth required is low but stable and moderately fast connection is needed. The PC is a rugged screenless and fanless unit that can be operated remotely. This allows for color/pattern selection along with custom patterns able to be uploaded and for troubleshooting to be done remotely. In case of internet outage or PC error the LED Controller will automatically play a prerecorded pattern as backup. The PC can Wake-On-LAN and can be rebooted remotely after any type of power outage.



The Tech installed will also be capable of Live audio sound reactive options using ambient noise from microphones, integration with outdoor speakers for special events, live Web Cams and Video Streaming, and is also compatible with the [Glow Fidelity Internet Radio](#) system expanding in 2021.

Custom live event and holiday LED patterns can be programmed at additional cost depending on the needs of the event. Motion, Wind, and Weather reactive patterns are also potentially able to be integrated into the system.



---

## **- Production / Fabrication**

While much of the production and programming can be done off-site, multiple on-site visits will be required to determine the total number of lighting fixtures that will be needed, their placement, and measurements between for wiring. Project materials are to be sourced and purchased. Some system components are ready for purchase as soon as funding is released. Other components are to be purchased only after final design is confirmed with proper measurements and layout given the unique shape of the Miramar Tree. Additional miscellaneous materials may be purchased leading up to and during on-site install.

## **- On-site Installation**

On-site installation will take place over multiple days and evenings of an estimated 1 week period. During installation and preliminary planning/measuring it will be required for a small team to climb the tree(s) along with and/or use of cherry picker that can be rented or supplied by DPW. Business insurance will be supplied covering such activities. Partial lane closures on Miramar st will likely need to be coned off when work is occurring overhead of lanes.

## **- Warranty**

Artist warranties custom wiring two years from date of Phase 5 Completion. With regard to manufacturer warranties for integrated components will be limited to warranties provided by the manufacturer. If any manufactured components fail within Artist's warranty period labor to replace/repair is covered but subject to Artist's availability. After the artist warranty period expires labor cost is standard pricing at time of repair. Current Rates (Subject to change): All custom production, programming, and design is a Day rate of \$600 per day with 1 day minimum on all projects. \$60 per hour after 1 day.

## **- COVID-19 Note**

Material and production pipelines have been disrupted because of the Pandemic. All timelines and pricing projections provided in this proposal are as current and accurate as possible at time of drafting, and are subject to change as necessary as the project proceeds forward.

